

Barnsley Neighbourhood Learning Net

Funded through LSCSY to be a part of innovative development across 4 areas in the Sub-region:

Doncaster, Rotherham, Sheffield and Barnsley

Recently awarded Test bed Learning Community Status



The Barnsley Neighbourhood Learning Net is:

- ❑ made up of individual Learning Nets which are based in the community and are managed by **Community Partnerships**
- ❑ contract-managed by the Local Education Authority
- ❑ strategically directed by:
 - ◆ Community Partnerships
 - ◆ Local Education Authority (BMBC)
 - ◆ Barnsley Community and Voluntary Network
 - ◆ Barnsley Learning Partnership

What is the purpose of the Neighbourhood Learning Net?

- Engagement and Progression of learners
- To encourage adults (19 +) to become involved in learning, especially those who are disadvantaged and hard to reach;
- To provide effective support, information and advice for learners towards building their self-confidence, encouraging them to progress in their learning and increasing their employability;

What is the purpose of the Neighbourhood Learning Net?

- Working towards a demand-led model
- To consult local people to find out what kinds of learning they want in their communities;
- To feedback to learning providers and encourage them to put on appropriate community-based courses;
- To inform the planning process for continuous improvement to the community-based adult learning curriculum and infrastructure.

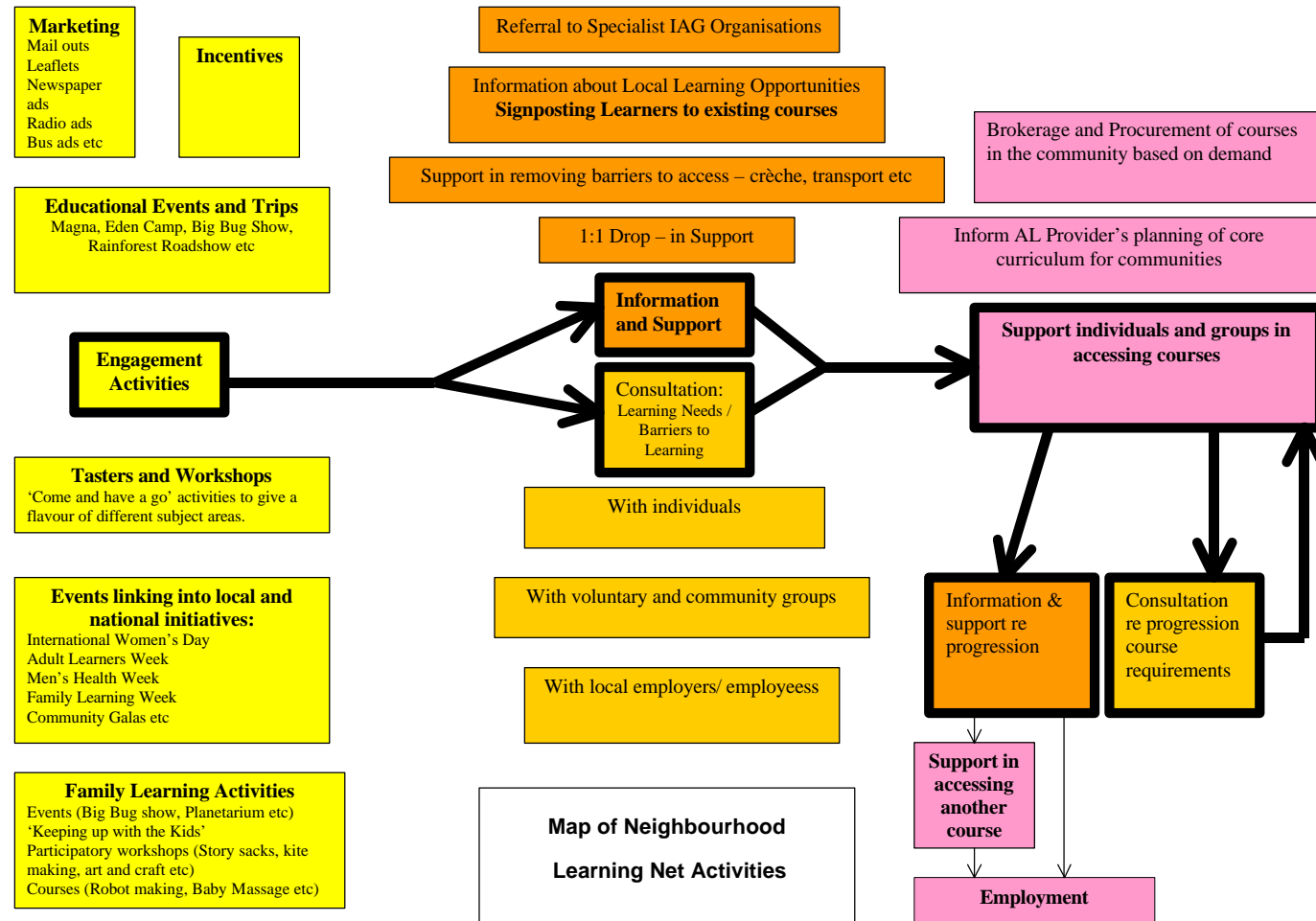
What do NLNs do for their communities?

- Kick start an interest in learning -innovative and fun events for adults and families
- Build self confidence – support for learners in getting started and progressing to the next level
- Provide a friendly face in the community - information and advice about courses and other learning opportunities;

What do NLNs do for their communities?

- Work with providers to bring learning provision into the area based on actual want and need
- Support community-based and voluntary organisations to build their capacity to deliver learning opportunities through the Neighbourhood Development Fund
- Work with Community Partnerships to ensure that learning is kept high on the regeneration agenda

NLN Core Activities



The NLN database is in 2 parts:

- **Monitoring Database**
- **Provision Database**

Monitoring Database

Collecting information about learners, their needs and their progress:

- ◆ Short Event Records
- ◆ NLN Database
- ◆ NLNM Aggregate Monthly Return

Provision Database

- ◆ Publicly accessible
- ◆ Adult and Family Learning opportunities and support available in communities
- ◆ Tool for auditing adult and community learning
- ◆ Tool for planning adult and community learning

Provision Database

The database will have the facility to aggregate details about provision relating to:

- Community Partnership areas
- Electoral Wards
- Area Forums
- Post Codes

Administration of the database

Requires up to date information from all providers

How this will be achieved:

- Core curriculum of larger providers (colleges etc) 'sucked in' from spreadsheets biannually;
- Other providers assigned individual 'log ins' to enter and update information on an ongoing basis;
- Central administrative support to oversee the process.

Benefits of the database for providers:

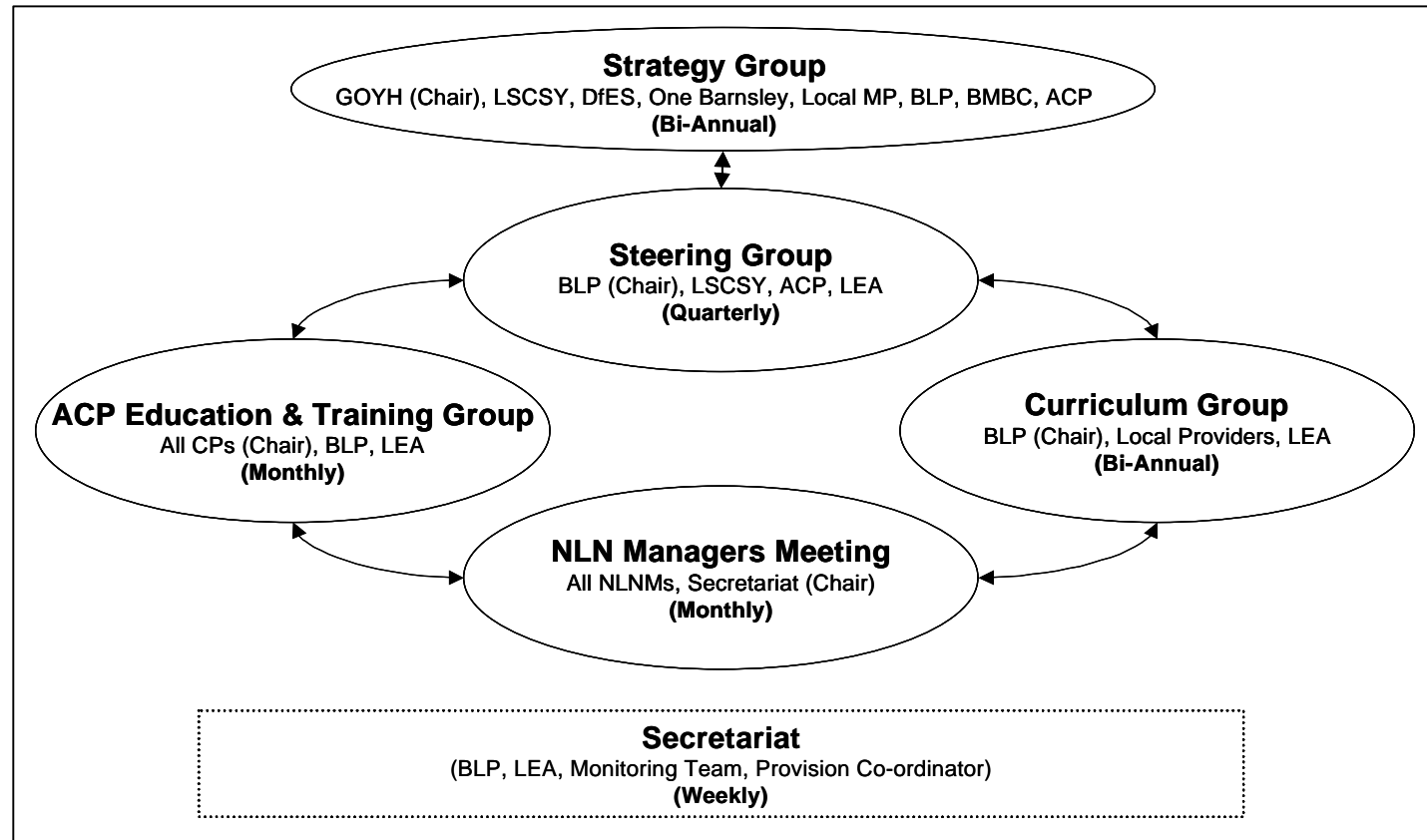
- Public can access information about learning opportunities;
- NLN can support providers in marketing provision;
- Progression opportunities can be identified;
- Gaps in provision or opportunities for progression can be identified;
- Provides a basis for partnership working in planning the community curriculum

Next Steps

Skills Demonstrator

- The Skills Demonstrator will be additional activity to that delivered through the Test Bed Learning Community (TLC).
- The Skills Demonstrator will sit within the new structure proposed for Barnsley partnership management

TLC / Skills Demonstrator Management Model



Skills Demonstrator

- Piloted activities in chosen Neighbourhood Learning Net (NLN) areas - clearly identifiable as additional to TLC activities.
- Local, detailed pilot work to be shared as “best practise” across the borough and beyond.
- Regular dissemination of outcomes across all NLN areas through the NLN Managers meetings.

Key Strands

- Research and Development
- Innovative curriculum design & delivery
- 'Communities as Educators'
- Making sense of the Learning Jigsaw
- Learner Incentives / Membership
- Workforce Development

Research and Development

- Action-based research exploring how individuals and groups are successfully engaged in learning and make further progress in learning and/or employment.

Indicative activities:

- Detailed attitudinal surveys of learners taking part in activities
- Communities of interest, especially those not currently engaged in learning, targeted through existing networks (e.g. Barnsley Football Club, Barnsley Alcohol Drugs and Substance Abuse, Bookstart, Surestart, Family Learning Network)

Innovative curriculum design & delivery

- Specific commissioning of new and exciting provision. New provision will be commissioned through the 'NLN Curriculum Group'.
- *Indicative activities:*
- Innovative Family Learning activities with clear progression opportunities into Adult Learning
- New Adult Learning activity in curriculum areas where there is currently a lack of capacity amongst local providers
- New courses in targeted curriculum areas
- Responsive to emerging skills gaps across the borough

'Communities as Educators'

- Development of a model of 'peer networks'. Greater alignment of NLN and Extended Schools. 'Learning Teams' developed in communities.
- *Indicative activities:*
- Pilot activities that align the NLN with school's agenda for parental and wider community involvement.
- Build on the pilot work the University of the First Age Community Fellowship Programme, train adults in the community to support delivery of learning across age groups and empower them to contribute and offer challenge to the learning agenda in their locality.

Making sense of the Learning Jigsaw

- Formalise organisational relationships through Service Level Agreements/ Memorandum of Understanding between partners to ensure that strategic linkages, resources and opportunities for mainstreaming are maximised.

Indicative activities:

Develop protocols / SLAs with partners such as providers, SureStarts, children's centres, IAG providers, JobcentrePlus, Primary Care Trust etc

Pilot activities with partners to test appropriateness of SLA/ Protocol content

Learner Incentives / Membership

- The Skills Demonstrator activity will develop and expand the 'chip and pin' card concept.

Indicative activities:

- Pilot learner incentives in targeted NLNs in association with Barnsley Football Club, Barnsley Premier Leisure and local cultural services.

Workforce Development

- Work closely with partners to exploring the NLN's potential to contribute on a neighbourhood level to the wider Workforce Development Agenda.

Indicative activities:

- Establish protocols for working with partners e.g. A4E, Trade Union Learning Reps, BMBC Personnel Development Scheme, Action Team for Jobs etc
- Pilot activities with partners, such as 'Information and Support Drop – Ins' at GP Surgeries in association with Action Team for Jobs.

Innovative pilot to develop the arts and care sectors in Barnsley.